

> Gap-free Records for Controlled Environments – viewLinc™ Automated Monitoring & Alarming System *When the Consequences of Incomplete Records are Serious*



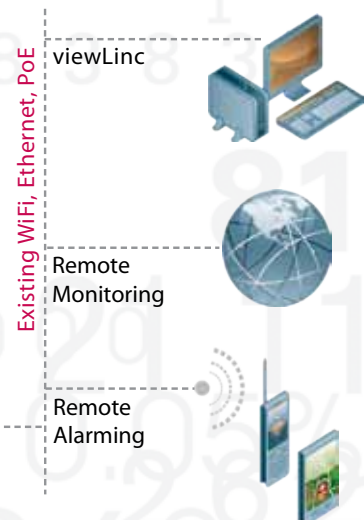
Monitor temperature, relative humidity, CO2, differential pressure, light, door switches and other variables.

The viewLinc Monitoring System provides gap-free records for controlled environments where high-valued products must be protected. The only system that combines data protection and long-term accuracy, viewLinc ensures you meet the most stringent compliance and inspection requirements. In addition, viewLinc automates record keeping to make your job easier.

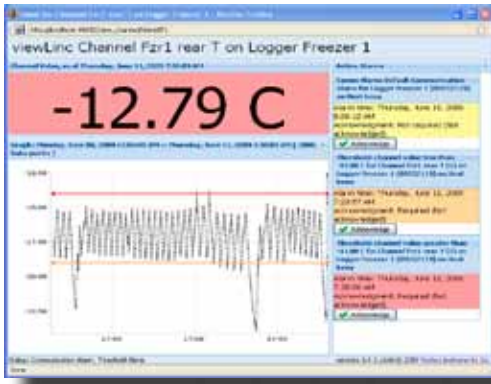
Important Benefits of the viewLinc System:

- > **Ensure Gap-free Records**
It's all automatic. Data collection occurs independently in three ways — in each data logger ... on the host PC ... and scheduled back-ups.
- > **Schedule Reports via Email**
Save reporting time. Automate historical and event reports and schedule delivery via email.
- > **Scale Up Without Expensive Services**
It's easy to add points to monitor — no programming, no outsourcing. Use your existing network — connect with Ethernet, PoE or WiFi.
- > **Meet Tough Standards**
Validatable and ready to meet compliance for FDA 21 CFR Part 11, CBER, JHACO, AATB, AABB and other regulatory bodies.

- > Warehouses
- > Stability Areas
- > Cold Rooms
- > Calibration Labs
- > Blood/Tissue Banks
- > Hospitals/Pharmacies
- > Archival Storage
- > Critical Manufacturing



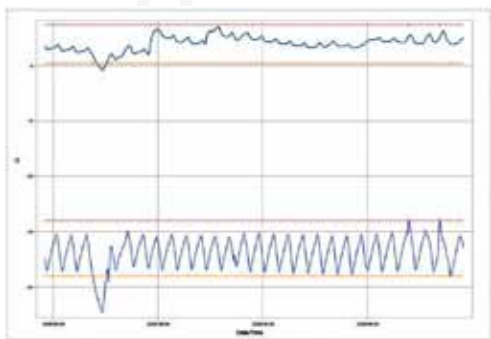
More Benefits from Veriteq's Automated Monitoring System



Trends and alarms in real-time.

Report Statistics for C channels, 2009-05-05 00:00:00 — 2009-05-05 00:00:00		
Channel:	1	2
First Sample Time:	2009-05-05 00:04:00	2009-05-05 00:01:00
Last Sample Time:	2009-05-05 23:59:00	2009-05-05 23:57:00
Max Value:	-4.05	4.43
Avg Value:	-15.27	1.93
Min Value:	-22.27	-0.43
Max Value - Min Value:	18.19	4.91
Max Value - Avg Value:	11.19	2.54
Avg Value - Min Value:	7.00	2.36
Standard Deviation:	3.52	0.98
MKT:	-14.20	2.00
Sample Count:	1102	2304
Sample Interval:	5 minutes	5 minutes
Max Value Time:	2009-05-07 09:49:00	2009-05-07 09:31:50
Min Value Time:	2009-05-08 00:34:00	2009-05-08 00:30:50

Reports emailed to you automatically.



Graphical reports with limits, over any time period; also created and sent as a scheduled email.

- > **Browser-based**
Monitor and report using any standard Internet browser. No need to install or validate software on individual workstations.
- > **View Environments in Real-Time**
See live graphical data from any logger channel with one click. No extra steps to create trend views.
- > **Flexible Alarm Management**
Establish alarm notification with text & email to PC, cell-phone and pager. Annunciate alarms through dial-out, lights and buzzers. Set delays and acknowledgement response times, and escalate unanswered alarms.
- > **Consistent Alarm Acknowledgements**
Set up a menu of common alarms and actions to ensure consistency. No need to struggle with a user's interpretation of a problem.
- > **Audit Trail for 21 CFR Part 11 Compliance**
Have peace of mind knowing that an audit trail records all interactions with the system.
- > **Calibration Made Easy**
Receive automatic notification via email when equipment is due for calibration — one less thing to remember for maintaining compliance.
- > **Highly Secure**
Use Windows authentication to access the system. Assign access rights for viewing and generating reports, acknowledging and configuring alarms, and full control.
- > **Economical Remote Connectivity**
Monitor a single point or multiple remote locations. viewLinc offers unlimited scalability; browser-based and site-licensed, it can keep pace with your needs at low cost.
- > **Protection From Data Loss**
Powered by a 10-year battery and on-board memory, loggers record data independent of your network. Temporary infrastructure failures won't cost you an audit, quality review or inspection.



COMPREHENSIVE SERVICES

Combining proactive support with responsive and accurate information, Veriteq reduces your cost of ownership:

- > Onsite installation, IQ/OQ validation documentation
- > Rapid support for the life of the product — onsite and remote, worldwide
- > Validation Rental systems — short-term without capital expense
- > Calibration plans — A2LA-accredited, NIST-traceable
- > Training — onsite and remote

To contact a Veriteq representative or one of our worldwide distributors, visit us online at veriteq.com